



Manufactured with high-performance precision aluminium die-cast parts. With milled dovetail guides.

Die-cast aluminium compound table KT 150

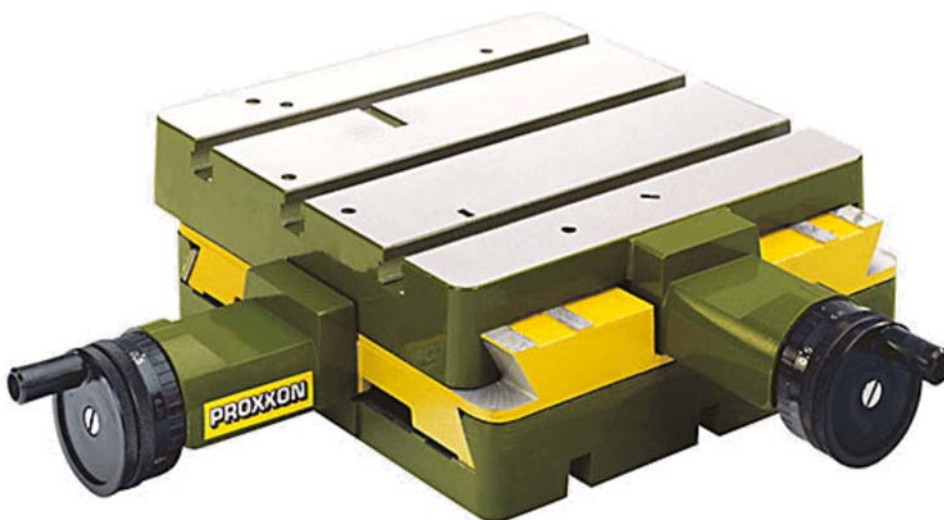
With precision milled dovetail slides, thus also suitable for metal work.

For routing, milling, slotting of steel, non-ferrous metals, plastics and wood. Each slide provided with locking screws. With re-adjustable dovetail guides to eliminate play. Feed adjustment by means of 2 handwheels with graduated, zero-adjustable dials (1 revolution = 2mm feed, 1 graduation = 0.05mm feed). Plane-milled table. Three continuous MICROMOT standard T-slots (12 x 6 x 5mm). Fence with predrilled positioning holes, fastening screws. A practical screw clamp used when routing. Table 200 x 200mm. Maximum travel 150 x 150mm. Overall height 75mm. Weight 4.9kg.

NO 20 150



See us on YouTube!



Step clamp set, of milled steel

For work pieces up to 35mm thickness. Two each step blocks and clamps. With matching nuts and screws for fixation in T-slots of the MICROMOT standard (12 x 6 x 5mm). Supplied in wooden box with sliding lid.

NO 24 257



Precision V-blocks

Used to clamp various work pieces. Made from hardened steel, precision ground in pairs. Four different depths of prism incisions V, all at 90°. Size 50 x 30 x 30mm. The solid clamp and knurled knob ensure superb securing of the workpiece. Supplied in a wooden box with sliding lid.

NO 24 262 2 pieces

