



For quick and strong clamping, even of larger workpieces.

Eccentric clamping fixture ES 70

For compound tables KT 70 and KT 230.

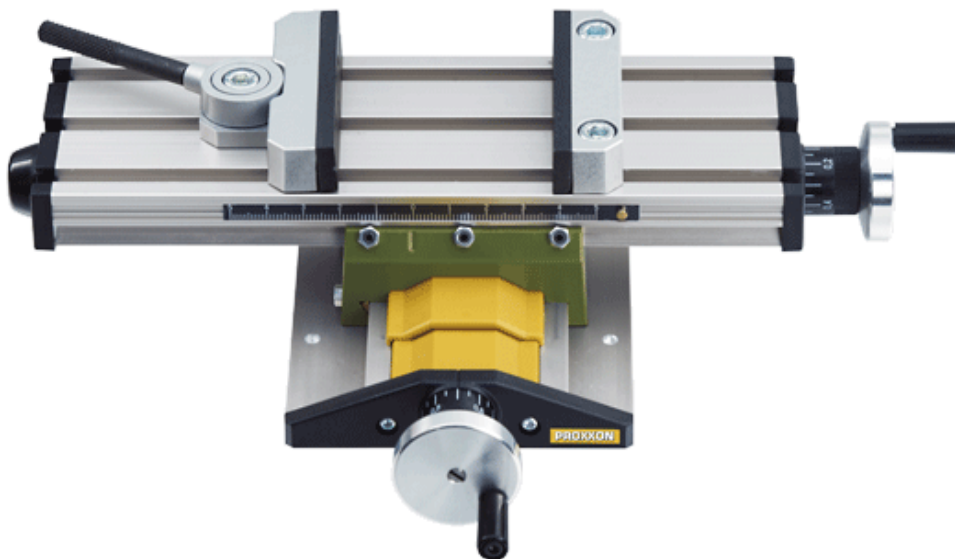


Ideal for series machining and full utilisation of the compound table. Vertical and horizontal prisms for round material. Replaceable clamping jaws. Eccentric stroke 1.5 mm. Jaw width 70 mm. Jaw height 15 mm. Including matching T-nuts and screws.

NO 24 270



See us on YouTube!



Note:

The compound table is not included in the scope of delivery.