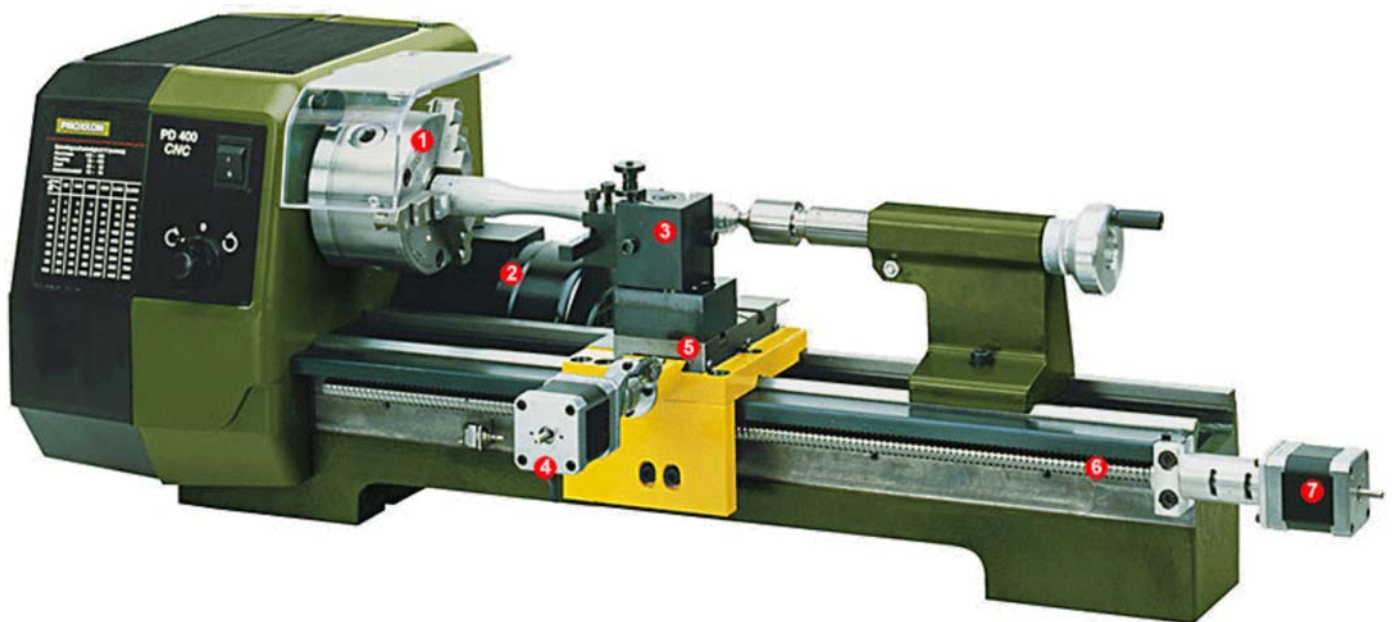




Precision and high repeat accuracy for individual parts and small series manufacture. Made in Germany.

Precision lathe PD 400/CNC

- Z-axis and X-axis with recirculating ball spindles and two powerful step motors.
- Control unit for connecting to PC or laptop with activation of the main spindle and the step motors.
- Including user-friendly and WINDOWS® compatible software (see description below).



- 1 High quality RÖHM precision 3-jaw lathe chuck. Witt Ø 100mm.
- 2 Powerful condenser motor with 550W.
- 3 Multiple steel holder with height-adjustable holder elements.
- 4 Step motor 1.8A for travel distance 70mm.
- 5 Recirculating ball spindle for the X-axis with 2.0mm inclination.
- 6 Recirculating ball spindle for the Z-axis with 4mm inclination.
- 7 Step motor 1.8A for travel distance 300mm.

CNC control of Z-axis and X-axis enables precise turning, facing and longitudinal turning of steel and non-ferrous metal.

Axes drive with powerful step motors and recirculating ball spindles (no backlash). For facing and longitudinal turning, for turning balls, radii and any freely formed contours made of steel and non-ferrous metal. Work piece machining is effected automatically by software and can be reproduced as often as required.

Otherwise the mechanical design is almost identical to the proven PROXXON lathe PD 400: Solid, cross-braced cast iron bed with ground and wide legged prism guide for apron and tailstock ensure vibration-free working and optimum precision. High quality 3-jaw lathe chuck (Ø 100mm). 6 spindle speeds (80 - 2,800/min) are provided via belt drive. Including rotating centre MK 2 and tailstock chuck. With quick-change tool post with 2 holders (with stop and height adjustability).

Complete with recirculating ball spindles, powerful step motors and the required limit switches, the CNC control unit, all necessary connecting cables and WINDOWS® compatible software on CD-ROM.

NO 24 500



See us on YouTube!



Double roller bearing recirculating ball spindle paired with powerful step motor driven in micro-step guarantee high machining precision and repeat accuracy.

PROXXON CAD/CAM software for WINDOWS®

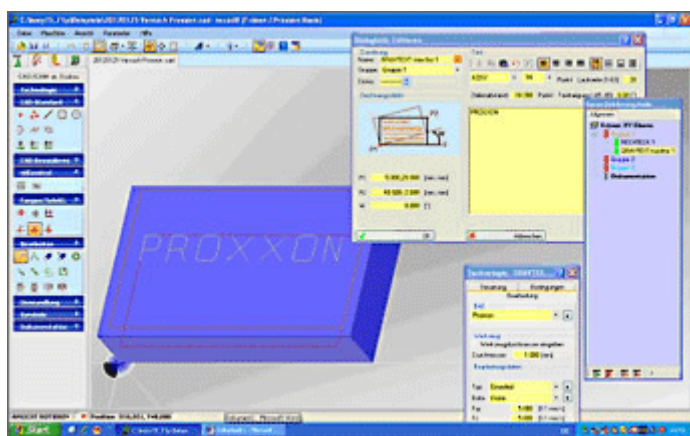
Brief description of software and hardware:

The software is harmonized with mechanics, motors and the control unit of the CNC machine, thus offering the optimum performance.

The CNC control unit controls the step motors of the machine. The PC software provides the machine with the geometry information for travel of the tools (via RS 232 interface). This means that the control unit is the interface between software and the mechanics of the machine.



Powerful micro processors and accordingly dimensioned step motors and phases ensure that the motors always provide enough power for any machining processes. Two freely usable output relays in the casing of the control unit provide facilities for control of additional functions, e.g. a working lamp. Including connection cables with suitable plugs and built-in power supply for connection to 220 - 240V.



Simple creation of work piece geometry

The CAD window is displayed when the programme starts. The work piece contour is created in the familiar WINDOWS® environment. Numerous auxiliary aids help during programme operation, which supports both coordinate entry (absolute and relative) in addition to mouse use.

Technology information is allocated to every drawing element. This makes, for example, different processing speeds and manual tool replacement possible. Read-in of existing files in .dxf format is possible as well.

Automatic generation of CAM data

The finished drawing of the tool is converted, by a mouse click, into the instruction set for the machine. So, machining can be started immediately. The instruction set generated in this way is in accordance with DIN/ISO 66025 and can be manually edited and exported. Conversely, the system also permits importing or complete self writing of data sets.



Software update for precision lathe PD 400/CNC

CNC simulation

If requested, the travel distances of the tool are simulated in the graphic window. In this way, faults in the programming

can be recognised in time.

Manual work

The handwheels are replaced with the step motors of the CNC machine. Nevertheless, manual machining is possible with the help of cursor buttons, since the step motors can be operated manually.

Software installation

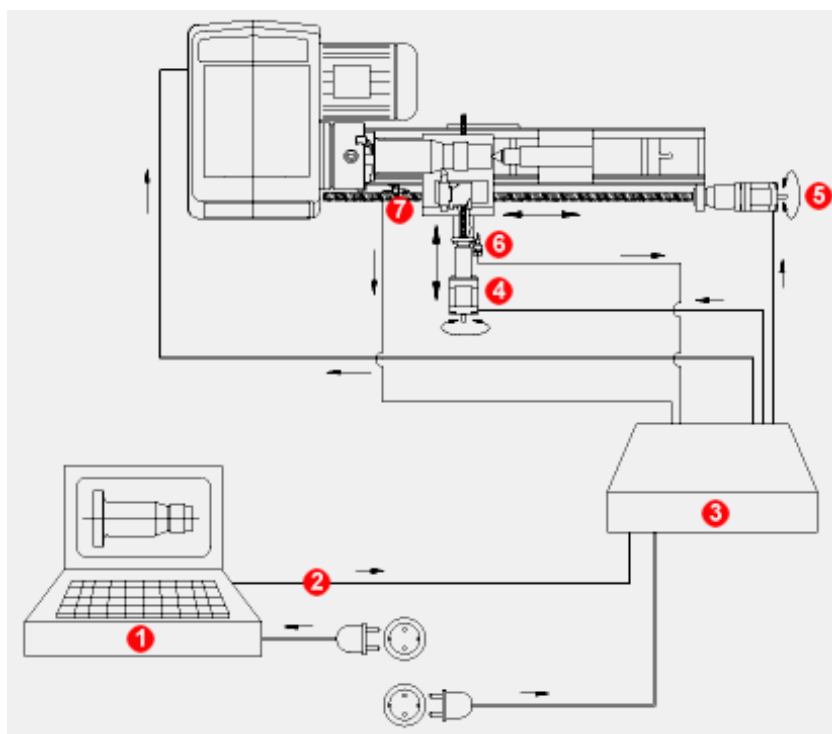
The PC software is supplied on a CD ROM. The problem-free installation is effected under WINDOWS® as usual.

Note:

PC or laptop are not part of the scope of delivery. Minimum requirements for the hardware: Pentium processor with 400 MHz frequency (or comparable), high-quality graphic card (64 MB RAM) and at least 40 MB free hard disc storage.

Technical data:

Power supply	220 - 240V / 50/60Hz
Drive	Condenser motor with 550W
Spindle drive	Recirculating ball spindle with 2.0mm inclination, flank diameter 8mm.
X-axis	Step motor with 1.8A and 50Ncm dwell moment; travel distance: approx. 70mm
Spindle drive	Recirculating ball spindle with 4.0mm inclination, flank diameter 12mm.
Z-axis	Step motor with 1.8A und 50Ncm dwell moment; travel distance: approx. 300mm
6 spindle revolutions	80 - 160 - 330 - 660 - 1,400 - 2,800/min Selectable with switch (two-stage) and by placing drive belt.
Control of step motors	via CNC control unit (included in scope of delivery)
Software	on CD-ROM, installation under Windows 98, Windows 2000, Windows XP, Windows Vista, Windows 7 and Windows 10
Drive connection	via RS 232 interface (or: use of a USB adapter), connecting cables to PC included in scope of delivery
Sizes	Machine: L 900 x W 400 x H 300mm Control unit: L 450 x W 270 x H 60mm
Total weight	Machine: approx. 45kg / Control unit: approx. 4kg



- ❶ Computer with software
- ❷ RS 232 interface
- ❸ MCS-multicontroller
- ❹ Step motor (X-axis)

- 5 Step motor (Z-axis)
- 6 Switch X-axis
- 7 Switch Z-axis

Thread cutting device for the lathe PD 400/CNC

A complete attachment kit with rotary encoder for the main spindle, belt pulleys, synchronous belts and all required accessory parts.

The software of the PD 400/CNC has already been programmed accordingly: Available now are the standard male threads M 1 to M 42. Special threads of any type (e.g. inch threads) can be manufactured as well with different pitches and thread depths. Including detailed assembly instructions.



NO 24 506

More accessories for precision lathe PD 400/CNC

Self-centering 3-jaw chuck

Identical to the lathe chuck of lathe PD 400. Capacity through reversing chucks 3 - 100mm.

NO 24 407



Self-centering 4-jaw chuck

The jaws are not independently adjustable, i.e. they are self-centering. High accuracy. Chuck diameter 100mm.

NO 24 408



Collet attachment with collets for PD 400

For accurate use on round components. One hardened collet each hardened collet 2 - 3 - 4 - 5 - 6 - 8 - 10 - 12 and 14mm are included. Concentric accuracy better than 0.02mm, much better than a chuck. One soft collet for making a custom size yourself. The included collet attachment is mounted in the place of the headstock chuck. Supplied in a wooden box.

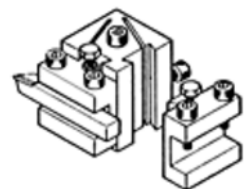
NO 24 419 complete



Tool post

Including two holders. Provides quick tool changes with easy height adjustment. For turning tools 10 x 10mm.

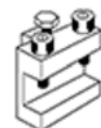
NO 24 415



Individual quick-change holder

Fits the tool post of PD 400.

NO 24 416



Die holder for round die.

For threads M 3 - 4 - 5 - 6 - 8 and 10.

With holder \varnothing 10mm for mounting in the tailstock drill chuck of the lathe. The holder is held by hand while cutting the threads. Neatly packed in wooden box with sliding lid.

NO 24 082



Cutting tools of high quality cobalt HSS steel, ground.

Five piece set

One each roughing out, parting, finishing cut, left and right cutter. Comes in wooden box with sliding lid. 10 x 10 x 80mm.

NO 24 550



Three piece thread cutting set

One cutter for external thread ❶, one for internal thread ❷ (both ground to 60°, metric), one general cutting ❸. Supplied in wooden box with sliding lid. 10 x 10 x 80mm.

NO 24 552



Cutter set with tungsten inserts

Three holders (90mm long):

- ❶ for roughing out;
- ❷ for longitudinal work;
- ❸ for 90mm boring bar, holes from 12mm.

Standard tungsten inserts, 55°, plated (commercially available version). Three additional inserts securing screw and key TX 8 are included. 10 x 10mm.

NO 24 556 complete



Tungsten disposable tips (not depicted)

For the holders as described above.

NO 24 557 Ten piece set

Three piece centre drill set

Made of HSS steel. DIN 333 (type A) 60°. Complete set centre drills with sizes of 2.0 - 2.5 and 3.15mm.

NO 24 630



HSS boring tool set, 6 pieces

One each cutter for 60 degree (metric) and 55 degree (Whitworth) inside threads, 1.3mm - 2.65mm and 4mm. Shaft of Ø 6mm. Length 95mm. The cutters are held by a tool holder (9 x 9mm) that mounts to the tool post of either PD 230/E, PD 250/E or PD 400. Comes in wooden box with sliding lid.

NO 24 520

