



With 20mm collar for all MICROMOT drilling and milling machines in operation with steel collets.



Engraving Device GE 20

For engraving letters, numbers and individual shapes in metal, plastic, glass or stoneware.

For name plates, jewellery or other objects of value. Also for working with self-made stencils or commercially available templates (plants, animals, coats of arms). For small size, individual shapes, cut-outs or outline shapes, even in series. A maximum of 14 characters can be fastened in the guide bar (template holder). Template contours are precisely to be followed using the guide marker (ball handle).

The lettering to be milled is scaled down during transfer. The transfer ratio can be set to 2:1, 3:1, 4:1 or 5:1 by simple adjustment of two screws.

The work piece is aligned and fixed on the movable guide block by means of clamping jaws (here MICROMOT clamping jaws set NO 24 256) or using a vice.

Scope of delivery:

2 sets of letters from A to Z, hyphen, full stop and dash (total 52 pieces), one each Allen key 1.5 - 3.0 and 5.0mm as well as a HEX (ball head) screwdriver 2.5mm. Includes a detailed instruction manual.

NO 27 106



See us on YouTube!

California Residents Prop 65 Information

⚠ WARNING:

This product can expose you to chemicals including lead, which are known to the State of California to cause cancer and birth defects or other reproductive harm. For more information go to www.P65Warnings.ca.gov.

Note:

Professional drill/grinder IBS/E and clamping jaws are not included in the scope of delivery.

Accessories for Engraving Device GE 20

Solid carbide stylus

For machining steel, cast steel, non-ferrous metals, plastics, glass, stoneware and tiles. Nose angle 60° for high stability. Shaft diameter 3.2mm. Not suitable for freehand work.

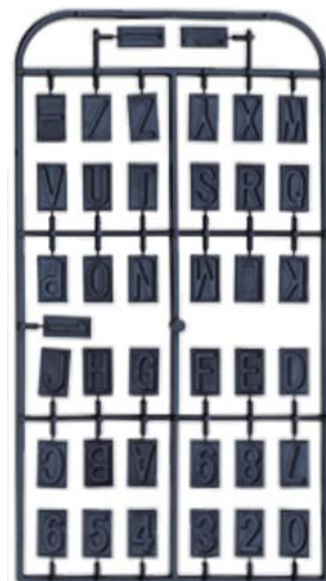


Engraving stylus

For V-shaped letters.

NO 28 765 Letter width 0.5mm

NO 28 766 Letter width 1mm



Stencil set

Letters A - Z, incl. hyphen, full stop and slash. Also numbers 0 - 9. For use with guide bar of the GE 20.

NO 27 104