



## Accessories for MICRO Mill PF 230 / FF 230.

### **Splash guard and chip collecting tray for PROXXON milling machines**



Made of 1/16" (1.5mm) thick sheet steel, powder-coated. Secure stand due to drill holes for fastening to a work surface (the use of steel sleeves keeps the tray tightly sealed). 27 1/2" x 16/12" x 1 37/64" (L 700mm, W 420mm, H 40mm).

**NO 24 322**

### **Fine Feed for Mill/Drill Head PF 230 and MICRO Milling Machine FF 230**

Easily installed. The feed may now be used via the height feed (vertical) or the fine feed in the tilted position. One revolution is equivalent to 1/16" (1.5mm) spindle travel, with 1 division = .002" (0.05mm). The graduated scale can be reset to zero.



**NO 24 140**

### **Five Piece Collet Set for PF 230 and FF 230**

Includes 1 each collet for round stock 3/32", 7/64", 1/8", 5/32" and 13/64" (2.4 - 3.0 - 3.2 - 4.0 and 5.0mm). Supplied in a wooden box and lid.

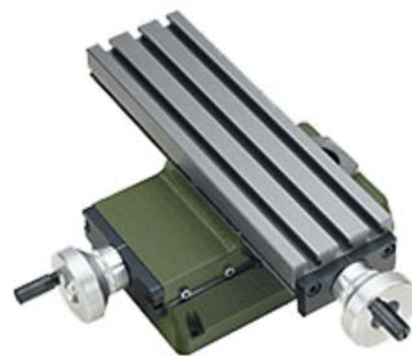
**NO 24 144**



## Compound Table KT 230 for PF 230

The individually available solid table is the same as described with the **MICRO Mill FF 230**, has a size of 10 5/8" x 3 5/32" (270 x 80mm) and is T-slotted to 15/32" x 15/64" x 13/64" (the MICROMOT norm of 12 x 6 x 5mm). The compound table does not include the headstock and column. The Mill Drill/ Head PF 230 may be attached to it.

**NO 24 106**



## Drill Chuck

German industrial drill chuck for MICRO Mill PF 230 and FF 230 with 13/32" (10mm) capacity and 13/32" (10mm) arbor to fit the 10mm collet.

**NO 24 110**



## Step Clamp Set

Made of steel. Complete with 2 step blocks, 2 clamps, 2 nuts and 2 T-slot nuts for MICROMOT standard (29/64" x 7/16" x 5/32" / 11.5 x 11 x 4mm). For use with the lathe systems PD 230/E, KT 150 and MF 70

**NO 24 256**



## Step Clamp Set

Consists of 2 step blocks and 2 clamps, 2 nuts, 2 T-slot nuts. Secures objects to approx. 1 3/8" (35 mm) high. May be used with PD 230/E and FF 230. Supplied in wooden box.

**NO 24 257**



### **Milling Cutter Set 5/64" - 13/64" (2 - 5mm)**

HSS, all with 15/64" (6mm) shank. Cutters of Ø 5/64", 7/64", 5/32" and 13/64" (2, 3, 4 and 5mm). Double fluted. Supplied in wooden box.

**NO 24 610**



### **Milling Cutter Set 15/64" - 13/32" (6 - 10mm)**

HSS, 4 cutters Ø 15/64", 9/32", 5/16" and 13/32" (6, 7, 8 and 10mm). Four flute design. Supplied in wooden box.

**NO 24 620**



### **Three Piece Center Drill Set**

HSS, 60°. Complete set with sizes of 2, 2.5 and 3.15mm (5/64", 3/32", 1/8"). Made from high-quality Cobalt HSS, pre-ground. Packaged in a wooden box.

**NO 24 630**



### **Precision Machine Vice**

Milled in steel. Can be used on its side and back. Width of jaws 2 3/8" (60mm), clamping capacity 1 2/3" (42mm). Complete with mounting bolts. Packed in a wooden box.

**NO 24 255**



### **Precision V-Blocks**

Used to clamp various work pieces. Made from hardened steel, precision ground in pairs. Four different depths of prism incisions V, all at 90°. Size 2" x 1 3/16" x 1 3/16" (50 x 30 x 30mm). The solid clamp and knurled knob ensure superb securing of the work piece.

**NO 24 262** 2 pieces



### **Edge Finder Set**

Used for fast and accurate location of starting point of work pieces with respect to the machine spindle on milling machines. Size 15/64" x 15/64" x 2" (6 x 6 x 50 mm) and 15/64" x 3/16" x 3" (6 x 5 x 75mm). Comes in a wooden box.

**NO 24 434**



## **14-piece parallel supports set**

Ground in pairs. For adjusting work on drilling machines, lathes and milling machines. Made of high-alloy, hardened steel (58 - 62 HRC). Parallel accuracy 0.002mm. 2 each of 8 x 10, 15, 20, 25, 30, 35 and 40mm. Length 100mm. Packed in a wooden box.



**NO 24 266**

6 pieces

### California Residents Prop 65 Information

 **WARNING:**

This product can expose you to chemicals including lead, which are known to the State of California to cause cancer and birth defects or other reproductive harm. For more information go to [www.P65Warnings.ca.gov](http://www.P65Warnings.ca.gov).